

OKLAHOMA DEPARTMENT OF ENVIRONMENTAL QUALITY

PUBLIC NOTICE

October 4, 2018

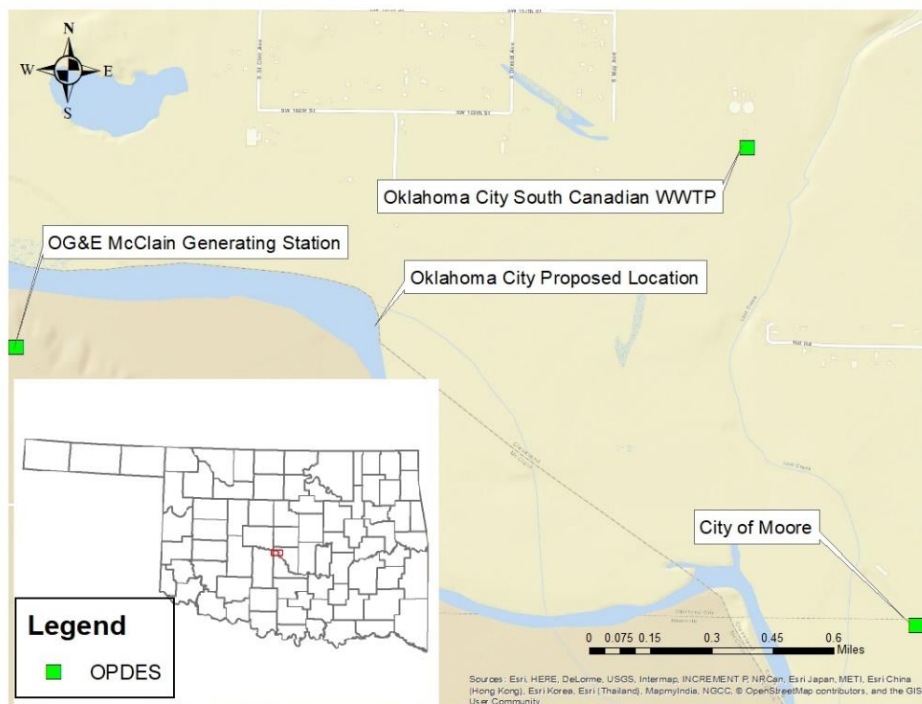
REQUEST FOR PUBLIC COMMENT ON A PROPOSED MODIFICATION TO OKLAHOMA'S WATER QUALITY MANAGEMENT PLAN FOR THE OKLAHOMA CITY SOUTH CANADIAN WASTEWATER TREATMENT PLANT

Public Comment Period Begins: October 4, 2018

Public Comment Period Ends: November 19, 2018

Permitee: Oklahoma City Water Utilities Trust, 420 W. Main, Suite 500, Oklahoma City, Oklahoma 73102. [Facility Legal Description: NE $\frac{1}{4}$, SE $\frac{1}{4}$, SW $\frac{1}{4}$, Section 30, Township 10 North, Range 3 West, I.M.]

Receiving waters and location: [Canadian River](#) (OK520610010010_20) (Latitude: 35° 17' 59" North; Longitude: 97° 34' 31" West).



The City of Oklahoma City has requested to change the location of point of discharge (POD) from an unnamed tributary of the Canadian River (UTO) to the Canadian River. The Association of Central Oklahoma Governments (ACOG) modified the WASP model completed by Guernsey in 2014 and proposed the new WLA.

The Canadian River (OK520610010010_20) is not listed in Appendix A of the Oklahoma Water Quality Standards (OAC 785:45)

and its beneficial uses are listed as Aesthetics, Agriculture, Fish and Wildlife Propagation - Warm Water Aquatic Community, Fish Consumption, and Secondary Body Contact Recreation.

The Canadian River was considered as attaining its beneficial uses based on the default protocol as it has not been assessed for any beneficial uses. This WLA has been developed in order to ensure that the limits assigned to the discharge are stringent enough to maintain DO standards under critical conditions. The proposed discharge limits for the South Canadian WWTP are shown below:

South Canadian WWTP

Spring: 10.0 mg/l CBOD₅; 1.0 mg/l NH₃-N; 7.0 mg/L DO
 Summer: 8.0 mg/l CBOD₅; 0.5 mg/l NH₃-N; 7.5 mg/L DO
 Winter: 25.0 mg/l CBOD₅; 4.1 mg/l NH₃-N; 5.0 mg/L DO

These limitations are minimum requirements. If a Total Maximum Daily Load (TMDL) is approved for the stream, any more stringent limitations contained in the TMDL will apply. The comment period will be open for 45 days. If you have any concerns regarding these proposed limits, please submit your comments in writing by the end of the workday on **November 19, 2018** to:

Soojung Lim
 Water Quality Division
 Oklahoma Department of Environmental Quality
 P.O. Box 1677
 Oklahoma City, OK 73101-1677
 (405) 702-8195
 E-mail: Water.Comments@deq.ok.gov

You may also request a public meeting in writing. If there is a significant degree of public interest, DEQ will schedule a public meeting. After evaluating comments received and making any necessary changes, the WLA will be submitted to the U.S. Environmental Protection Agency (EPA) for final approval.

FACILITY 208:		OKLAHOMA CITY - SOUTH		CITY/TOWN:	OKLAHOMA CITY
FACILITY LEGAL LOCATION:		NE¼, SE ¼, SW ¼ S30 T10N R03W		COUNTY:	OKLAHOMA
POINT OF DISCHARGE LOCATION:		SE ¼, NW ¼ S36 T10N R04W		SEGMENT:	520610
POD LATITUDE**:		35° 17' 59" N		POD LONGITUDE**:	97° 34' 31" W
OPDES #	OK0038385			Facility ID #:	S-23528
CURRENT TREATMENT PROCESS:		SEQUENTIAL BATCH REACTOR			
PRESENT AVG. DAILY FLOW (MGD):		1.24	2010 CENSUS POPULATION:		44,629
DESIGN AVG. DAILY FLOW (MGD)*:		8.66	YEAR 2035 PROJECTED POPULATION:		72,840
RECEIVING STREAM:		Canadian River (OK Waterbody ID: OK520610010010_20)			
STREAM CLASS:		Perennial	7 DAY 2 YEAR LOW FLOW (MGD):		4.8

FACILITY 208:		OKLAHOMA CITY - SOUTH		CITY/TOWN:		OKLAHOMA CITY			
DMA:		Oklahoma City Water Utilities Trust		DMA STATUS:		APPROVED (Rev 10/5/2010)			
WASTELOAD ALLOCATION*:		Spring Limits (Apr- May): 10 mg/L CBOD₅ , 10 mg/l TSS, 1.0 mg/L NH₃-N , and 7.0 mg/L DO Summer Limits (Jun- Oct): 8 mg/L CBOD₅ , 10 mg/l TSS, 0.5 mg/L NH₃-N , and 7.5 mg/L DO Winter Limits (Nov - Mar): 25 mg/L CBOD₅ , 30 mg/l TSS, 4.1 mg/L NH₃-N , and 5.0 mg/L DO							
Strategy: Recommended Treatment Alternatives									
A)		New Facility							
B)		Land Application							
c)		Advanced Treatment							
						EPA Approval Date:		6/30/15	
						Record Last Updated:		9/22/15	
*Updated WLA based on WLA Study (October 2014) of the Canadian River from Union City to Wayne, Oklahoma.									
**Proposed POD (9/20/2018).									



You are receiving this notice because you are either on DEQ's list to receive all public notices about proposed Waste Load Allocations or you are located downstream in an affected watershed. If you are receiving this notice in error, are getting multiple notices, or do not want to receive future notices, please let us know. In addition to notices about new or changes in 208 Plans for facilities, DEQ's Modeling, TMDL, 208 & 303(d) Section sends out public notices about proposed changes in the Integrated Report, proposed TMDLs, 404 projects, 401 Certification requests, and proposed changes in the CPP.

If you would like to receive any or all of these public notices via e-mail, please send your e-mail address to Water.Comments@deq.ok.gov. Also, please let us know if you want to receive notices for the entire State or just for your [watershed](#). **By receiving PDF public notices via e-mail, you will help save money and the environment by reducing the amount of paper we use to mail them.** In addition to helping the environment, you will be able to click on helpful FYI hyperlinks.



Note to newspapers: This notice is for your informational purposes only. Do not publish in the legal section or as a legal notice.