



Scott A. Thompson
Executive Director

OKLAHOMA DEPARTMENT OF ENVIRONMENTAL QUALITY

Mary Fallin
Governor

PUBLIC NOTICE

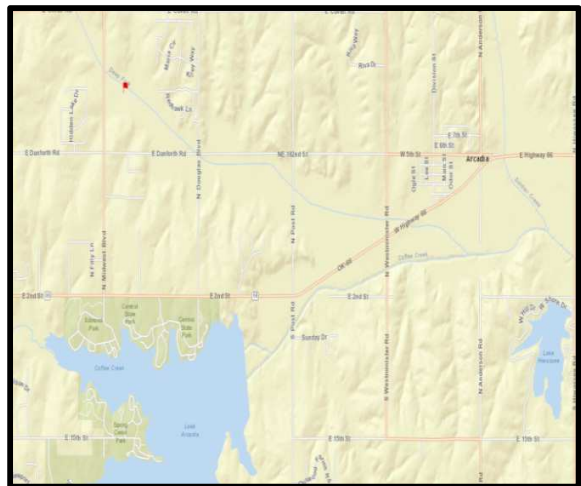
December 31, 2015

REQUEST FOR PUBLIC COMMENT ON PROPOSED MODIFICATION TO OKLAHOMA'S WATER QUALITY MANAGEMENT PLAN FOR THE COFFEE CREEK WATER RESOURCE RECOVERY FACILITY EXPANSION

Public Comment Period Begins: December 31, 2015

Public Comment Period Ends: February 16, 2016

The City of Edmond and the Edmond Public Works Administration currently operates a wastewater treatment facility also known as the Coffee Creek Water Resource Recovery Facility (CCWRRF). The CCWRRF is an extended aeration plant with a current design flow of 9 million gallons per day (MGD). This facility currently discharges into Coffee Creek (OK520710010090_00) which is a tributary to the [Deep Fork of the Canadian River](#) (OK520710010010_00) in Oklahoma County in the [Deep Fork](#) watershed. The City has considered upgrading this facility to an advanced mechanical plant and hired a consultant to conduct a waste load allocation (WLA) study. A WLA is the maximum amount of pollutants in treated wastewater that can safely be discharged into a waterbody without adversely affecting its quality.



The [Oklahoma Department of Environmental Quality](#) (DEQ), along with the U.S. Environmental Protection Agency (EPA), evaluated the results of the consultant's WLA study and the condition of Coffee Creek (OK520710010090_00) to approve of these recommended maximum amounts that may be discharged into it. This facility will be upgraded in two phases, with a final design flow of 16 MGD.

Summer Limits (June – October):
10 mg/l CBOD₅
15 mg/l TSS (total suspended solids)
2 mg/l NH₃N (ammonia)
6 mg/l DO (dissolved oxygen)

Spring Limits (April – May):
10 mg/l CBOD₅
15 mg/l TSS
3 mg/l NH₃N
6 mg/l DO

Winter Limits (November – March):
10 mg/l CBOD₅
15 mg/l TSS
4 mg/l NH₃N
5.5 mg/l DO

The comment period will be open for 45 days. If you have any concerns regarding these proposed

limits, please submit your comments in writing by the end of the workday on **February 16, 2016** to:

David Akakpo
 Oklahoma DEQ - Water Quality Division
 P.O. Box 1677
 Oklahoma City, OK 73101-1677
 (405) 702-8192
 E-mail: Water.Comments@deq.ok.gov

You may also request a public meeting in writing. If there is a significant degree of public interest, DEQ will schedule a public meeting. After evaluating comments received and making any necessary changes, the WLA will be submitted to EPA for final approval.

FACILITY 208:	City of Edmond WWTF (proposed)		CITY/TOWN:	Edmond
FACILITY LEGAL LOCATION:	SE/NW/SW S23, T14N, R02W		COUNTY:	Oklahoma
POD LOCATION:	SE/NW/SW S23, T14N, R02W		SEGMENT:	520710
POD LATITUDE:	35° 40' 25" N		POD LONGITUDE:	97° 23' 06" W
NPDES #:	OK0026026		FACILITY ID #:	S-20554
CURRENT TREATMENT PROCESS:	Extended Aeration			
PRESENT AVG. DAILY FLOW (MGD):	9	2015 CENSUS POPULATION:	91,000	
DESIGN AVG. DAILY FLOW (MGD):	16	YEAR 2035 PROJECTED POPULATION:	129,180	
RECEIVING STREAM:	Coffee Creek (OK WBID: OK520710010090_00)		STREAM CLASS:	Intermittent
7-day 2-year low flow in MGD (7Q2)	0			
DMA:	City of Edmond / Edmond PWA		DMA STATUS:	Approved
WASTELOAD ALLOCATION:	Apr-May (Spring): 10 mg/l CBOD ₅ , 15 mg/l TSS, 2 mg/l NH ₃ -N, 6 mg/l DO Jun-Oct (Summer): 10 mg/l CBOD ₅ , 15 mg/l TSS, 3 mg/l NH ₃ -N, 6 mg/l DO Nov-Mar (Winter): 10 mg/l CBOD ₅ , 15 mg/l TSS, 4 mg/l NH ₃ -N, 5.5 mg/l DO			
RECOMMENDED TREATMENT ALTERNATIVES				
A)	CONSOLIDATE OR REGIONAL TREATMENT			
B)	UPGRADE			
			EPA APPROVAL DATE:	Pending
			RECORD LAST UPDATED:	12/29/2015



You are receiving this notice because you are either on DEQ's list to receive all public notices about proposed Waste Load Allocations or you are located downstream in an affected watershed. If you are receiving this notice in error, are getting multiple notices, or do not want to receive future notices, please let us know. In addition to notices about changes in 208 Plans for facilities, the DEQ's Watershed Planning & Stormwater Permitting Section sends out public notices about proposed changes in the Integrated Report, proposed TMDLs, 404 projects, 401 Certification requests, stormwater permits, and proposed changes in the CPP.

If you would like to receive any or all of these public notices via e-mail, please send your e-mail address to Water.Comments@deq.ok.gov. Also, please let us know if you want to receive notices for the entire State or just for your [watershed](#). **By receiving PDF public notices via e-mail, you will help save money and the environment by reducing the amount of paper we use to mail them.** In addition to helping the environment, you will be able to click on helpful FYI hyperlinks.



Note to newspapers: This notice is for informational purposes only. **Do not publish in the legal section or as a legal notice.**