

OKLAHOMA DEPARTMENT OF ENVIRONMENTAL QUALITY

PUBLIC NOTICE

December 13, 2018

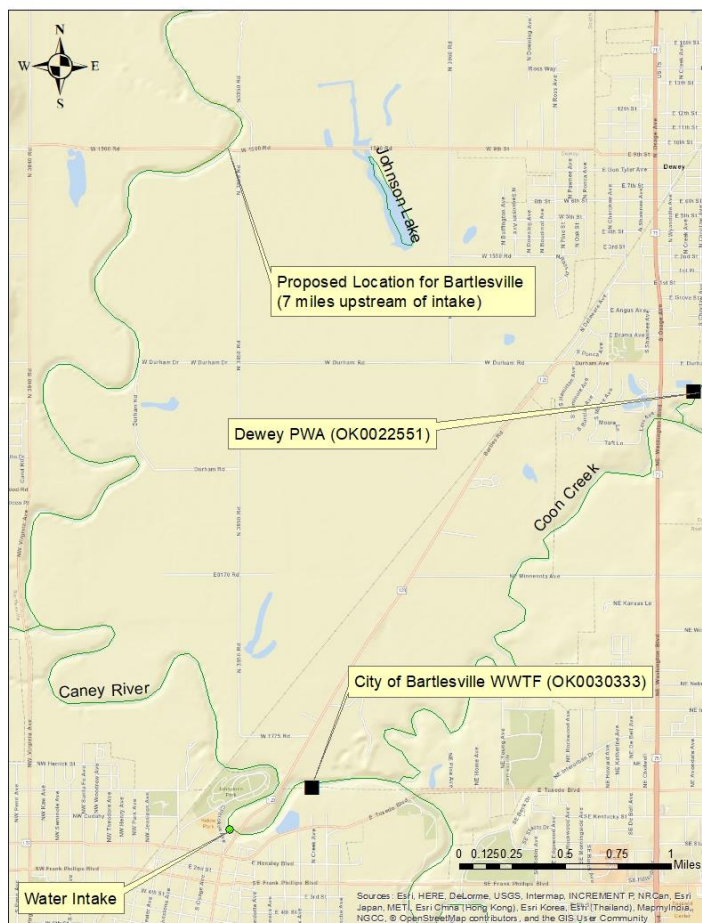
REQUEST FOR PUBLIC COMMENT ON A PROPOSED MODIFICATION TO OKLAHOMA'S WATER QUALITY MANAGEMENT PLAN FOR THE CITY OF BARTLESVILLE WASTEWATER TREATMENT FACILITY

Public Comment Period Begins: December 13, 2018

Public Comment Period Ends: January 28, 2019

Permitee: City of Bartlesville, 401 S. Johnson Ave., Bartlesville, Oklahoma 74003. [Facility Legal Description: NW $\frac{1}{4}$, NE $\frac{1}{4}$, NW $\frac{1}{4}$, Section 7, Township 26 North, Range 13 East, I.M.]

Receiving waters and location: [Caney River](#) (OK121400020010_10 & OK121400020010_00) (Latitude: 35° 48' 1.27" North; Longitude: 95° 58' 20.72" West & Latitude: 36° 45' 25.965" North; Longitude: 95° 57' 54.406" West).



The City of Bartlesville is planning to upgrade the design flow and add the second point of discharge (POD) to Caney River (OK121400020010_10) in addition to current POD at Caney River (OK121400020010_00). Caney River is listed in Appendix A for WWAC fishes bioassessments for the OK121400020010_10 segment, but it is not assessed for the OK121400020010_00 segment.

Tetra Tech developed QUAL2K models to simulate DO substances in the receiving stream (Caney River) and considered it as attaining DO criteria. Caney River has beneficial uses as Aesthetics, Agriculture, Fish and Wildlife Propagation - Warm Water Aquatic Community, Fish Consumption, Primary Body Contact Recreation, and Public and Private Water Supply.

This WLA has been developed in order to ensure that the limits assigned to the

discharge are stringent enough to maintain DO standards under critical conditions. The proposed discharge limits for the Bartlesville WWTF are shown below:

City of Bartlesville WWTF

At current POD with design flow of 8.206 MGD.

Year-round: 10.0 mg/l BOD₅; 1.0 mg/l NH₃-N; 6.0 mg/L DO; 15.0 mg/L TSS

At 50-50 split discharge at current POD and 7 miles upstream of intake,

Year-round: 10.0 mg/l BOD₅; 1.0 mg/l NH₃-N; 6.0 mg/L DO; 15.0 mg/L TSS

Exception for spring at 7 miles upstream of intake: no discharge from 4/1 to 6/15

These limitations are minimum requirements. If a Total Maximum Daily Load (TMDL) is approved for the stream, any more stringent limitations contained in the TMDL will apply. The comment period will be open for 45 days. If you have any concerns regarding these proposed limits, please submit your comments in writing by the end of the workday on **January 28, 2019** to:

Soojung Lim
 Water Quality Division
 Oklahoma Department of Environmental Quality
 P.O. Box 1677
 Oklahoma City, OK 73101-1677
 (405) 702-8195
 E-mail: Water.Comments@deq.ok.gov

You may also request a public meeting in writing. If there is a significant degree of public interest, DEQ will schedule a public meeting. After evaluating comments received and making any necessary changes, the WLA will be submitted to the U.S. Environmental Protection Agency (EPA) for final approval.

FACILITY 208:		BARTLESVILLE WWTF		CITY/TOWN:	Bartlesville
FACILITY LEGAL LOCATION:		NW¼ NE¼ NW¼ S07 T26N R13E		COUNTY:	WASHINGTON
POINT OF DISCHARGE LOCATION:		NW¼ NE¼ NW¼ S07 T26N R13E		SEGMENT:	121400
POD LATITUDE:		36° 45' 25.965" N		POD LONGITUDE:	95° 57' 54.406" W
SECOND POINT OF DISCHARGE LOCATION*:				NW¼ NW¼ NW¼ S25 T27N R12E	
SECOND POD LATITUDE*:		36° 48' 1.27" N		SECOND POD LONGITUDE*:	95° 58' 20.72" W
OPDES #	OK0030333			Facility ID #:	S-21402
CURRENT TREATMENT PROCESS:		ACTIVATED SLUDGE			
PRESENT AVG. DAILY FLOW (MGD):		6.0		2010 CENSUS POPULATION:	35,750

FACILITY 208:		BARTLESVILLE WWTF		CITY/TOWN:		Bartlesville			
DESIGN AVG. DAILY FLOW (MGD)*:		7.0 8.206		YEAR 2050 PROJECTED POPULATION*:		41,441			
RECEIVING STREAM*:		Caney River (OK Waterbody ID: OK121400020010_10 & OK121400020010_00)							
STREAM CLASS:		Perennial		7 DAY 2 YEAR LOW FLOW (MGD)*:		6-46 9.0			
DMA:		Bartlesville Municipal Authority and City of Bartlesville		DMA STATUS:		APPROVED			
WASTELOAD ALLOCATION*:		<p>At current POD: Year-round: 10 mg/L BOD₅, 10 mg/l TSS, 2.0 1.0 mg/L NH₃-N, and 6.0 mg/L DO</p> <p>At 50-50 split discharge at the current POD and second POD: Year-round: 10 mg/L BOD₅, 10 mg/l TSS, 1.0 mg/L NH₃-N, and 6.0 mg/L DO Exception for spring: No discharge at the second POD</p>							
Strategy: Recommended Treatment Alternatives									
A)		Advanced Treatment							
B)		Land Application							
c)									
						EPA Approval Date:		2/23/1994	
						Record Last Updated:		11/29/2018	
*Updated WLA based on WLA Study (October 2018)									



You are receiving this notice because you are either on DEQ's list to receive all public notices about proposed Waste Load Allocations or you are located downstream in an affected watershed. If you are receiving this notice in error, are getting multiple notices, or do not want to receive future notices, please let us know. In addition to notices about new or changes in 208 Plans for facilities, DEQ's Modeling, TMDL, 208 & 303(d) Section sends out public notices about proposed changes in the Integrated Report, proposed TMDLs, 404 projects, 401 Certification requests, and proposed changes in the CPP.

If you would like to receive any or all of these public notices via e-mail, please send your e-mail address to Water.Comments@deq.ok.gov. Also, please let us know if you want to receive notices for the entire State or just for your watershed. **By receiving PDF public notices via e-mail, you will help save money and the environment by reducing the amount of paper we use to mail them.** In addition to helping the environment, you will be able to click on helpful FYI hyperlinks.



Note to newspapers: This notice is for your informational purposes only. Do not publish in the legal section or as a legal notice.